



LEAVERITE NEWS

Grand Junction Gem and Mineral Club
2328 Monument Road
P.O.Box 953, Grand Junction, CO 81502



★ PRESIDENTS MESSAGE BY MEL BERSCH ★

Normally for the months of June, July, and August we only have one meeting per month and that is the potluck night. This year we will be adding another club meeting on June 8th, Cookie Night, for a rock auction. Bring 5 nice rocks or rock related items per member to sell at a 40/60 minimum split (40% to the club). A great way to make a little money for yourself and the club.

Our upcoming 70th annual Gem, Mineral, & Jewelry show "Mining for Gems", to be held at Two Rivers Convention Center Mother's Day weekend, May 13-14, is on track to be a great show. Remember this is our biggest event we put on for the club and the community. We need volunteers to help in all capacities, so help where you can. Putting on this show helps the cost of maintaining our club house and enables us to keep our dues as low as they are.

Our matching building fund donations are up to \$613.00. Thanks to all who have donated so far. We are looking to meet the goal of \$1000 by July 1, 2017.

Check out meetup.com or contact trip leaders to get signed up for our field trips. Get your name on the list; we will try to accommodate all who are interested in going.

April 2017				Volume 34 Number 4		
Sunday	Monday	Tuesday	Wednesday	Thursday	Friday	Saturday
 Match \$1000.00 Donation! Building Fund			70th Annual Grand Junction Gem and Mineral Show Two Rivers Convention Center May 13-14, 2017			1 Open Shop Green River Show
2 Green River Show	3	4	5 Filigree 9-12 12-3 Open Shop 6-8:30 pm Chain Gang	6	7	8 9-12 Open Shop Workday Grab Bags 10-12
9 	10	11 Gold Mining Group 7:00 pm 	12 Filigree 9-12 12-3 Open Shop 7:00 Board-Show Meeting	13 Cookie Meeting 6:30pm	14 	15 Workday Kids Korner 9-12 Open Shop
16 	17	18	19 Filigree 9-12 12-3 Open Shop	20	21	22 9-12 Open Shop Faceting 9-30 Field Trip 
23 Field Trip 30	24	25	26 Filigree 9-12 12-3 Open Shop	27 Dinner Meeting 6:30pm	28 Mineral Group	29 9-12 Open Shop Heritage Days

70th Annual Gem and Mineral Show-- Mining for Gems

Two Rivers Convention Center May 13-14, 2017



With the help of everyone, this will be the best show we have ever had. Scott Warren is getting advertising spots on TV with CBS, Fox, and PBS. The Show should have lots of coverage.

As usual, Complimentary Tickets are available to pass out to your family and friends. This is also a great way to advertise the show. You only have to pay for those tickets which were actually used. See Wayne Simms for these "complimentary" tickets. Admission is \$3 on Saturday, \$1 on Sunday for those returning to the show, and \$3 on Sunday for those attending on Sunday only. Some previous, inactive, club members are unintentionally given free show admission because they wear the turquoise club vest. Wayne Sims would like to

require members to show their blue paid card for 2017 to get into the show for free.

The demonstration area will be smaller this year. Cindy Teare and JoAnn Piburn will identify individuals who'll demonstrate their craft expertise. Wayne McMacken will have Bambi Harmon create the vendor placement map.

Two Rivers is under new management and has been contacted by Wayne. We need to rent tables.

Kay Crawford needs help with making boxes. Pam Johnson circulated a signup sheet for display cases. A memorial case and a 70th anniversary case will be set up. Brad Harmon needs mining equipment for his display case.

Please sign up for helping with Show Work Days. The following are some of the work meetings scheduled:

April 8th Grab Bags 10:00

April 15th Kids Korner

The Grand Valley Gold Prospecting Group

The Grand Valley Gold Prospecting Club's officers are: President, Laura Adamson; Vice President, Robert Hubbard; Secretary, Chuck Shephard. This group meets each month at the clubhouse at 7:00 pm on the 2nd Tuesday. They usually have a field trip on the week end after their meeting to somewhere close by. The group is very enthused about the joining of the two clubs. Everyone is welcome to attend. They are working on creating a metal detector class. Some of the members are planning on joining with the Good Sam RV Club, Two River Sams Chapter, April 19-25, to meet near Olathe for some fieldtrips from there.



Education Opportunities--Heritage Days

The Gem and Mineral Club will again participate in the Heritage Days event at the Palisade Riverbend Park April 29, 2017 from 9:00 am - 3:00 pm. This free event offers a variety of outdoor activities that youth and their families can participate in including fishing, archery, rock climbing, shooting, nature hikes and a hunting simulator. Jim Schultz will make 300 flyers to hand out and Joe Jones (Chicken Jones' son) will donate rocks for the kids. We need volunteers to help man our site as well as good samples of rocks and minerals to give to the kids. We have Apache tears and some petrified wood to give to the kids. This is not only a teaching opportunity but helps advertise our club and show. Contact Pam Bersch for more information.

Field Trips

Wayne McMacken has the master list of waivers. You must have a signed waiver to go on a field trip. Wayne Sims needs help with field trips leaders. He cannot go on all the field trips so if anyone can help that would be great. He needs a leader or will have to cancel the trips. Contact him at 816-506-2734 or e-mail lks10042@msn.com if you can be the leader.

April 29	Blue forest in Wyoming;
June 10	Grape Agate bed
August 14	Hartsel

May 21	Floy Wash
Douglas pass	no date has been set as yet.

Crystal Geyser in Utah

There will be two field trips to the Crystal Geyser, April 22nd or the 23rd.

Meet at the Fruita Visitor's Center at 8:00 am. Come see a cold-water geyser that at one time shot into the air 20 feet, but now only two feet. There are so many minerals in the water that it forms pools on the bank of the Green River before emptying into the river. Before the geyser there is a hillside of Travertine, aragonite. This was a mining operation at one time. It is a rare example of a cold-water carbon dioxide driven geyser; geothermal activity does not play a role in the activity of the geyser. The ground water near the geyser has significant quantities of dissolved carbon dioxide, along with substantial underground gas accumulations in the surrounding area. Saturation of the aquifer with CO₂ creates enough pressure to force groundwater through the geyser and out on to the surface. Crystal Geyser is located on the east bank of the Green River approximately 4.5 miles (7.25 km) downstream from Green River, Utah. This is an easy one day trip, no four-wheeler or high clearance vehicle needed, bring water and lunch, small tools might be necessary. Field trip leader is Wayne Sims 970-314-2970.

Cisco, Utah

Sunday April 23rd. Meet at the Fruita Visitor's Center at 8:30 am

This is a day trip to a very neat place where you can find petrified wood, agates, look at dinosaur bones, and many other finds. It is a must go to for unique geography. Any vehicle can drive to location, need water, lunch, small tools, hiking boots. Harold Epple is the field trip leader phone 970-858-4804.

Proposed 2017 Field Trips

Date	Type	Location	Leader	Notes
April 22	Day	Cold Water Gyser	Wayne Sims	8:00 am, Fruita Visitor's Center
April 23	Day	Cisco		8:00 am, Fruita Visitor's Center
April 23	Day	Cold Water Gyser	Wayne Sims	8:30 am, Fruita Visitor's Center
April 29	Overnight	Blue Forest		
May 6	Overnight	Henry Mountains	Mel Bersch	
May 21	Day	Floy Wash		
June 10	Day	Grape Agate		
June 17	Rain Date			
June 24	Day	Gold Claims	Chris Henderson	
July 29-Aug 5	Overnight	Wiggin Fork, WY	Sue Smith	
July 22	Day	Portland Mine	Wayne Sims	
August 2-14	Overnight	Barite dig.	See you there!	Buena Vista Show and Hartsel
September 23	Overnight	Lake George	Chris Henderson	
September 16	Day	State Bridge	Wayne Sims	
October 21	Day	West Water	Mike Burritt	
November 4	Day	Sand Flats	Jim Schultz	

April Program

April 13th will be our Cookie & Program night. Our program will be Dinosaur Bone Histology-The Microstructures in their bones and what the structures mean. The microstructures of dinosaur bone can help identify fast-growing bone from slower-growing bone (warm-blooded vs cold-blooded), the climate and environment the dinosaur lived in, and whether they were four legged and became two legged.



This program will be presented by Anthony Kovschak, MSc, CPG: Tony is an experienced exploration geologist having worked in the geology field for over 45 years. His career included teaching geology at Colorado Mesa University for five years, as well as History of Science and Geology at Colorado Christian University.

Mineral Group

We had a nice group of people to enjoy the evening. We looked at some stromatolites and their structures. Pat Mitchell gave an informative talk about stromatolites and their origin. Mel had some specimens that he purchased at the Albuquerque Mineral Show last weekend that he had to add to the collection. Last meeting, we talked about agates and how some Brazilian agates are dyed. John Mayerik tried to create one on his own.

The next meeting will be at the Bersch's house at 6:30pm on Apr 28, 2017. All club members and their guest are welcome. Bring 5 specimens to look at and to discuss from your collection or specimens you need identified. We will try to help. Here are some pictures from our March meeting:



Fluorite from Blanchard Mine, New Mexico



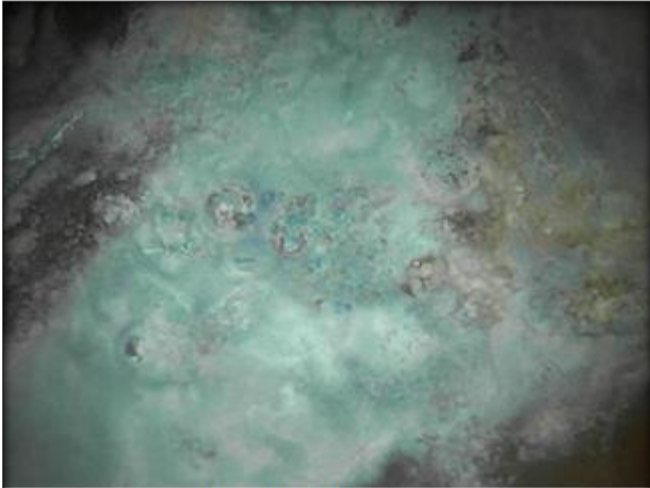
Fossil lobster from Solnhofen, Germany
Eryma modestiformis



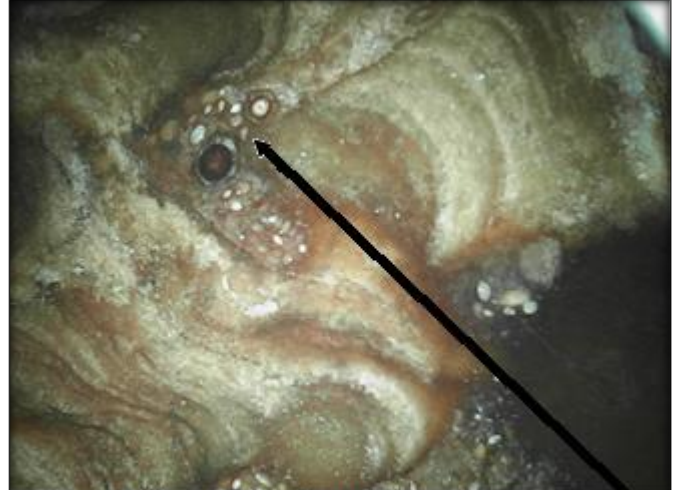
Mangano-calcite from China



Mangano-calcite from China
fluorescent –under black light



Dyed Agate



Stromatolite showing cyanobacteria

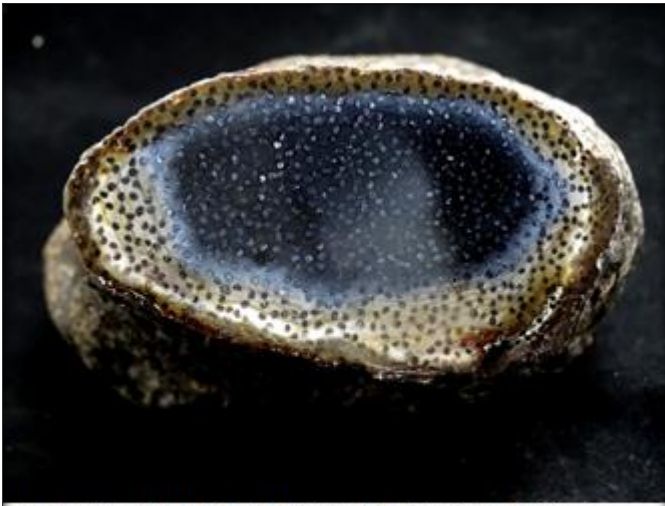


Very rare Fossil fern – cyathodendron texasum



Very rare Fossil fern – cyathodendron texasum
end view

Stout's Electric  **SALES & SERVICE**
Motor Service, Inc. **rewind-repair**
 430 S. 4th Street **AO SMITH**
 Grand Junction, CO 81501 **BALDOR**
Phone 970-243-3944 **CENTURY**
 email sales@stoutselectric.com **FASCO**
LARGEST STOCK OF CAPACITORS IN **GENERAL ELECTRIC**
WESTERN COLORADO **UNIVERSAL**
WEG



Rare fossil palm bulb from Oak County, Texas

top view



Rare fossil palm bulb from Oak County, Texas

Classes



Wayne McMacken wants to start a beginning Silver Smithing class, possibly Tuesday mornings 9:00 AM to 12:00 Noon. He would like input if this timeslot will work. Call 208-2534.

Pam Bersch, 242-3134, is the new filigree instructor and is having a class on Wednesday mornings from 9-12.

Faceting is taught one on one and you can contact Connie Duncan, 244-2984, to schedule an instructor.

RMFMS Convention 2018

RMFMS delegates voted to have the 2018 held in Fairplay, as proposed, the weekend of June 8,9,10... in conjunction with the Fairplay Contin-Tail Rock Swap. The meetings/breakfast/banquet will be held at the new Riverside Inn, next to the swap grounds, along US 285. This convention will be totally different than most RMFMS events I've ever attended. We'll do the dirty work on Saturday, then adjourn to field trips on Sunday and perhaps Monday. Saturday night's speaker will be Dr. Peter Modreski and his "Colorado's Best 10 Collecting Sites." This will be followed on Sunday with trips to probably five of the sites. This event requires that all Colorado clubs in some way be involved in the event (spread the wealth and the whole organization won't fall on one club).

Thanks!, Beth Simmons, Ph.D., RMFMS 2017 President

Pete Mygatt

Pete Mygatt died February 23 in Boise, Idaho. He was 90.

Mygatt, his wife, Marilyn, and their friends, John D. and Vanetta Moore, spotted dinosaur bones in the high desert near the Colorado-Utah line on March 4, 1981. The find was the culmination of many hours of searching through the high desert in search of such an outcrop, said a son, Matt Mygatt.

"I was very excited for him because we had searched for dinosaur fossils for years," Matt Mygatt said of learning of the find in a phone call. "As I recollect it, he said, 'Bingo!'" on spotting the bones of late Jurassic-era animals.

Condolences



Among those bones were those of what is now known as *Mymoorapelta*, or “Shield of Mygatt-Moore,” an armored dinosaur, or ankylosaur, of the period.

The quarry “keeps yielding new insights into the ancient world,” said Julia McHugh, curator of paleontology for Dinosaur Journey. “Mygatt-Moore has basically changed the face of the paleontology program at the Museums of Western Colorado in a profound way,” she said.

While Pete Mygatt worked on the bones from the quarry, he preferred the kind of searching that led to the find, Matt Mygatt said. “He was more the explorer, he wanted to tromp around desert, looking for more.”

In addition to his paleontological passion — Mygatt was a member of the Society of Vertebrate Paleontology — Mygatt was a newspaperman, expert horseman and owner of Mustangs, of the Ford variety. He was originally rejected from the U.S. Air Force because of a childhood bout with polio, so he joined the U.S. Forest Service, where he demonstrated the ability to carry 90 pounds of firefighting equipment on his back, “and he got into the Air Force after that,” Matt Mygatt said.

He is survived by his wife, Marilyn Kniseley Mygatt; two sons, Matt of Carlsbad, California., and Tony of El Dorado Hills, California; Marilyn’s children, Amy Ashman of Grand Junction and Wendy Jordan and Scott Ackleson, both of Boise.

Mount Etna

Mount Etna, the largest active volcano in Italy, erupted yesterday (Feb. 27) for the first time this year, spewing fountains of bright orange lava toward the night skies over Sicily, according to news reports.

The spectacular eruption began Monday evening, but activity at the volcano has since quelled, reported Reuters. The fiery explosion could be seen in the nearby town of Catania, though the local airport remained open and is operating as usual today, reported the Associated Press (AP). Authorities are tracking the eruption, and the resulting ash cloud, but they reported no immediate danger for the various towns and resorts in the area, according to the AP.



Mount Etna erupted in a fiery display on Feb. 27, 2017. This photo, taken on Feb. 28, shows fountains of lava exploding from the famously active volcano. Credit: Pilastro/Fotogramma/Ropi/Zuma

Mount Etna is located near the eastern coast of the island of Sicily, and is almost constantly belching gas or lava. The famously active volcano is 10,900 feet (3,329 meters) tall, making it the tallest volcano in Europe.

Though the volcano can rumble to life several times a year, Mount Etna's last major eruption was in 1992. In 2013, Mount Etna was designated a UNESCO World Heritage Site.



Original article on Live Science. **March Program**
Volcanic History of the Grand Mesa (Volcanology "101")
Doctor Rex Cole
Professor of Geology, Colorado Mesa University

A special thanks to Dr. Cole for his presentation. I'm sorry to say that the Leaverite editors missed this meeting. So, for others who also may have missed this program or readers outside our membership, I have included this information from his abstract, The Grand Mesa Basalt Field, Western Colorado, published 2007 in The Geological

Society of America (GSA):

Grand Mesa is a prominent east-west landform capped by basalt (published argon-argon dates of 9.22 to 10.76 Ma; average = 9.92 Ma). The original basalt field may have had a surface area of up to 750 mi², but due to extensive Neogene erosion, the present-day remnant is about 53 mi². This remnant has a "Y-shaped" outline, with Crag Crest on the east forming the stem, and the Palisade and Flowing Park lobes forming the branches. Thickness of the in-place basalt ranges from about 600 ft near Crag Crest to less than 200 ft on the western tips of the lobes. Small, isolated remnants (< 200 ft thick) of 10 Ma (?) basalt also occur 15 mi east of Crag Crest in the Crater Peak area.

The basalt sequence rests on a paleo-topographic Miocene surface that ranges in elevation from 11,227 ft on the east (Crater Peak) to 9,632 ft on the west (tip of Palisade lobe); the average east-to-west gradient is about 54 ft/mi. Rocks beneath the basalt sequence include the Uinta, Green River, and Wasatch Formations (Paleocene-Eocene), plus an unnamed Miocene sequence of mudrock, lithic sandstone, and volcanoclastic conglomerate. Vent areas for the basalt were probably in the Electric Mountain area, where several major east-west dikes occur. Stretched vesicles (N = 647) in the western part of the field show flow movement to the southwest (vector mean = 244). This observation is consistent with the general slope of the sub-basalt surface and changes in thickness.

Details on the basalt stratigraphy are available from nine core holes drilled on the Palisade lobe by the U.S. Bureau of Reclamation in 1985-86. In these cores, thickness of the basalt sequence ranges from 233 to 616 ft, with conspicuous thinning from east to west. Flow thickness ranges from 3.7 to 70.9 ft (average = 23.8 ft). The maximum number of flows observed in a single core was 26. Beds of rust-colored, fine-grained sedimentary rock commonly occur between the flows, but correlate poorly from core to core and in nearby outcrops. These beds probably represent wind-blown detritus, weathering residuum, and incipient soils. Each core hole penetrated into the Miocene (?) unnamed unit. In outcrop, flows have lenticular cross sections and may up to 1,000 ft across, but most are less than 300 ft across.

For general information from Wikipedia:

The Grand Mesa is a large mesa in western Colorado in the United States. It is the largest flat-topped mountain in the world. It has an area of about 500 square miles (1,300 km²) and stretches for about 40 miles (64 km) east of Grand Junction between the Colorado River and the Gunnison River, its tributary to the south. The north side of the mesa is drained largely by Plateau Creek, a smaller tributary of the Colorado. The west side is drained largely by Kannah Creek, which is received to the west by the lower Gunnison River. The mesa rises about 6,000 feet (1,800 m) above the surrounding river valleys, including the Grand Valley to the west, reaching an elevation of about 11,000 feet (3,400 m), with a maximum elevation of 11,333 feet (3,454 m) at Crater Peak. Much of the mesa is within Grand Mesa National Forest. Over 300 lakes, including many reservoirs created and used for drinking and irrigation water, are scattered along the top of the formation. The Grand Mesa is flat in some areas, but quite rugged in others.

<http://www.the-vug.com/educate-and-inform/mineral-shows/#april>

Area Shows

The following are some of the shows in the area. Check out the following websites for the complete listing with additional information.

<http://www.rockngem.com/ShowDatesFiles/ShowDatesDisplayAll.php?ShowState=ALL>

<https://xpopress.com/show/exposearch>

<http://www.mineralevents.com/>

April	Club	City	State
1-2	Paradise Gem & Mineral Club	Chico	CA
1-2	Lincoln Gem and Mineral Club	Lincoln	NE
7-9	Fort Collins Rockhounds Gem & Mineral Show	Larimer County Fairgrounds	Loveland
7-9	Golden Spike Gem and Mineral Society	Ogden	UT
7	North Jeffco Gem & Mineral Club Silent Auction	Arvada Community Center	Arvada
8-9	Mariposa Gem and Mineral Club	Mariposa	CA
14-16	Colorado Mineral & Fossil Spring Show	The Crown Plaza Hotel Convention Center	Aurora
14-16	Rocky Mountain Gem & Mineral Spring Show	The Crown Plaza Hotel Convention Center	Denver
20-23	Colorado Independent Warehouse Show - Spring	The Rock Warehouse	Denver
21-23	Wasatch Gem Society	South Jordan	UT
21-23	Wholesale and retail show; Gem Faire Inc	San Diego	CA
22-23	Conejo Gem & Mineral Club	Newbury Park	CA
28-30	Gem Faire Inc	Santa Rosa	CA
29-30	Antelope Valley Gem and Mineral Club	Lancaster	CA

Grand Junction Gem and Mineral Club

Officers

President	Mel Bersch	242-3134
Vice President	Mike Burritt	260-3897
Co-Secretary	Anita Martinez	434-9270
Co-Secretary	Chris Henderson	719-244-3192
Treasurer	Pam Bersch	242-3134

Directors

Pat Martinez	434-9270
Cindy Teare	462-6806
Teri Drost	256-0983
Jim Schultz	242-0428
Betty Jo (BJ Brown)	241-3051

Committee Chairpersons

Audit	Kathy Ericson	623-2522
Building and Ground	Sylvester Spaeth	846-5716
	Judy Nason	250-9128
Compliance	Jim Schultz	242-0428
Correspondence	Bambi Harmon	216-4540
Decorating	Linda Dunham	623-3610
	Val Meduros	773-4244
Display Cases	Carmen Bruno	773-4247
Education	Cindy Teare	462-6806
Field Trips	Wayne Sims	314-2970
Funding/Constr.	Mike Cosby	589-0687
Historian		
Hospitality	Judy Nason	250-9128
Inventory		
Name Tags	Melinda Hanson	712-6972

Leaverite Editors

Lorrie Wallace	250-1122
JoAnn Whalen	424-2007
Evita Schultz	242-0428
Jim Schultz	242-0428
Carrie Riggs	
Sue Smith	245-5602
Teri Drost	260-2478
Wayne McMacken	208-2534
Bill Hood	241-8020
Thom Ericson	623-2522
Scott Pugsley	972-953-7735
Wayne McMacken	208-2534
Bambi Harmon	216-4540
Linda Sims	314-2970
Linda Sims	314-2970
John Mayerik	243-8589

Librarian

Meet-Up

Membership/Badges

Nominating

Publicity

Scholarships

Shop Foremen

Show

Show Assistant

Supplies

Vests

Website

Board Meeting

The board will meet at Mel Bersch's house, 248 Little Park Road, at 7:00 pm on the Wednesday before the 2nd Thursday Cookie Meeting each month. All club members are welcome to attend. Hope to see you there.

Club Information

The Grand Junction Gem & Mineral Club, Inc. is affiliated with the American Federation of Mineralogical Societies, and the Rocky Mountain Federation of Mineralogical Societies. The club is located at 2328 Monument Road Grand Junction, CO, mailing address: P. O. Box 953, Grand Junction, CO 81502 The Club is a nonprofit, 501(c)3 tax-exempt, educational organization. Our purpose shall be exclusively educational and social: To increase and disseminate knowledge of the earth sciences pertaining to minerals, gems, rocks, artifacts, fossils and similar subjects; To promote and perpetuate knowledge of the lapidary arts; To encourage field trips; To encourage greater public interest and education in gems, fossils and minerals, cooperating with established institutions in such matters. The Grand Junction Gem and Mineral Club meets on the second and fourth Thursday of each month at 6:30 pm in our club building. June, July, and August meetings will be on the fourth Thursday only. November and December meetings will be on the second Thursday only. Our Annual Show is Mother's Day Weekend and is held at Two Rivers Convention Center at 159 Main St, Grand Junction, CO 81501. Classes and workshops are offered throughout the year and are announced in the newsletter.

The Facetors Group

The Facetors Group meets at the clubhouse on the 3rd Saturday of each month at 9:30 am. They have a Project of the Month and a People's Choice. They also have teachers available for one-on-one classes. Contact Connie Duncan at 244-2984 for information about the group or classes.

The Grand Valley Gold Prospectors Group

The Grand Valley Gold Prospectors Group is now part of the Gem and Mineral club. They will meet each month at the clubhouse at 7:00 pm on the 2nd Tuesday. Everyone is welcome to attend the group. P.O. Box 1357 Grand Junction, CO 81501. Laura Adamson pres., 260-6375; Robert Hubbard vice pres., 254-1449; Chuck Shepard Secretary, 270-5807

The Mineral Group

The Mineral Group meets at the Bersch's, 248 Little Park Rd, at 6:30, on the Friday after the 4th Thursday's Club Meeting and is open to all club members and guests. A potluck will be followed by discussion and microscopic images of various minerals. Please bring up to 5 specimens, and/or other minerals you wish to look at for the discussion.

New Members

Welcome to the Grand Junction Gem and Mineral Club. Include your email address when you register to receive newsletters and updates. Check out the website for past newsletters and general information. Order a vest made to your size from Linda Sims for \$20.00 and a name Tag from Melinda Hanson for \$10.00. Be sure to sign up for some classes to learn how to use the machines in our shop so you can participate in open shop.

Dues

Our calendar year is January 1 - December 31. Dues are due by December 31 but must be in by January 30 for names to be included in the Club Directory. Please pay your dues at the meeting or send check made out to Grand Junction Gem and Mineral Club, P. O. Box 953 Grand Junction, CO 81502. Prospective members should attend one general meeting to obtain a membership application. Annual dues will be prorated after July 1st.

Adult Member - \$30.00 (18+), 2nd Adult, same household - \$10.00 Children under 18 years, same household - No Cost

Club Rules and Regulations

The notebook of rules and regulations is available on the front table at all meetings for members to read.

Gem and Mineral Classes

Most classes are 6 weeks. Member's cost \$30.00. Non-member's cost is \$60.00. The cost of the classes is based on 6 weeks and prorated when the class is shorter. Please contact instructors to sign up for classes.

Class	Instructor	Phone	Open Shop
Beading	Tiny Blasdal	858-7975	Shop Chairman: Thom Ericson 623-2522
Chain Making	Cindy Teare	462-6806	Shop Supervisors:
Faceting	Connie Duncan	244-2984	Wednesday: 12-3 Thom Ericson 623-2522
Filigree	Pam Bersch	242-3134	Saturday: 9-12 Scott Pugsley 972-953-7735
Intarsia	Jim Lynch	361-2123	Previous instruction in use of equipment is required
Lapidary	Jim Schultz	242-0428	before using any tools or machines in the shop.
Lapidary	Mike Burritt	260-3897	Sign in each time you use the shop.
Silversmith	JoAnn Piburn	245-1669	Help with the clean-up before leaving.
Silversmith	Wayne McMacken	208-2534	Shop fee is \$5.00/session.
Wire Weaving	JoAnn Piburn	245-1669	Slab saw \$.26 per square inch.
Wire Wrap			Always—Safety First

The Leaverite News

The Leaverite News is your newsletter. Articles, ideas and news should come from the club members. If you are an officer, director, or committee chair person you should plan to submit monthly updates by the 15th of each month. News should be emailed to leaveritenews@gmail.com or contact Lorrie Wallace (250-1122 or JoAnn Whalen (424-2007, 554 Casa Rio Ct., Grand Junction, CO, 81507. *Leaverite News is published nine months of the year (Sept-May by the Grand Junction Gem and Mineral Club, Inc. Articles printed in this newsletter are the experiences and/or opinions of the individuals submitting them. They do not necessarily reflect the views or opinions of the Grand Junction Gem and Mineral Club, nor of the editors. Articles written without a byline are written by the editor. We are not responsible for authenticity, safety, or reliability of publications. All articles/photos are included in accordance to fair use for research and education. Caution and safety should always be practiced when trying out any new idea, venture or exploration in the field. We request corrections and/or additions to articles.*

Grand Junction Gem and Mineral Website

Our website, www.grandjunctionrockclub.org, has meeting information, Leaverite Newsletter, Classes, Field Trips, & Photo Gallery. Send information to John Mayerik; 243-8589; email Grandjunctionrockclub@gmail.com

Meetup

Meetups are neighbors getting together to learn something, do something, share something. The Club is registered at the Grand Junction Meetup. Go to http://www.meetup.com/cities/us/co/grand_junction/ to register or for information or call Jim Schultz at 242-0428.

Summary of Minutes of the Gem and Mineral Club Board Meetings

Board Meeting

March 8, 2017

An audit was done on the safety deposit box and the “Blue Book” was updated.

Membership: Meli Hanson with assistance from Cathy Riggs and Sue Smith.

Dues: If dues are not paid by January 30th members names will be moved to an inactive list as noted in the “Blue Book”. The inactive list will be maintained approximately two years before the inactive members are deleted. We need a focus on member retention since some join for one year only.

Show: See body of Newsletter

Fund Raising: Is someone interested in being a Fund Raising Chairman?

Advertising: Mike hopes to raise \$500 by selling ads in our newsletter.

Field Trip Participation: The Board decided each field trip leader will determine the number of individuals they will allowed on their field trips. Similarly, for large groups the field trip leader may determine if additional field trip leaders are needed.

Inventory: Pat Martinez will do an inventory of club equipment.

Rock Auction: There will be an in-house rock auction on Cookie Night, June 8th.

General Meetings

March 9, 2017

Thom Ericson had family members visiting.

Mike Burritt introduced the program being presented by Dr. Rex Cole, Professor of Geology, Colorado Mesa University

Jan’s husband, Dave, is really not doing well. Please send him your thoughts and prayers.

Classes: Cindy Teare:

Field Trips: March 3rd, Green River will be having a Gem Show.

Fundraising: Club matching fundraising is about \$700.00 currently, we had a gentleman “double down” for the cookie night only. If you donated that night, he would match your donation. Then the donation would be again, matched.

2017 Budget: posted , GJGMC Board approved.

The current priority is survey work of the property boundaries. Mel is going to make a poster to put up in the clubhouse to show the progress of the matching funds.

Jan has Wooden Display Showcase for sale. \$150.00 We require that someone fill a fund-raising chair position.

Brinna Hunt will be having a yard sale this weekend. Address is 530 Garfield Drive. Phone 970-261-8879 10A.M. To 3P.M.

Show Report: Wayne McMacken-body of newsletter
Chris Henderson, Asst. Secretary, GJGMC

March 23, 2017

The membership list will be available soon. Please check your information for accuracy.

Please pay your dues. Those who have not paid will be removed from the membership list.

Building and Maintenance: Shelves bought from Kmart were set up in the new storage building by Sylvester Spaeth and Wayne Sims.

Building Fund: Donations are tax deductible and can be given to Pam Bersch. Currently, members have raised \$613 toward the \$1000 Challenge. The GJGMC property is 2.14 acres and has a value of 267K (Mesa Co assessors). An aerial photo provided by Dave McCollough indicates approximate property boundaries. The western boundary is only 22’ from the club building. Therefore, with the 10’ setback requirement there is no room to extend the building to the west. Mel has found one of the property pins. Perhaps the Gold Prospector Group can find the other pins using metal detectors. Please consider volunteering as our Fund Raising Chairman.

Field Trips: Mike Burritt cannot lead the Blue Forest trip due to medical issues. Can anyone lead this trip? Wayne Sims will lead two trips to Cold Water Geyser near Green River, UT on April 22 and 23. Green River UT will have their first rock show March 31 – April 2.

Education: Colorado Division of Parks and Wildlife will host the Outdoor Heritage Day on April.

Classes: see calendar

Annual Show Update: Committee chaired by Wayne McMacken-see body of newsletter.

Submitted by Anita Martinez (secretary)

BLM planning rule gives locals a voice

Late last year, the federal Bureau of Land Management issued a new and long overdue rule— called Planning 2.0 — that gave a wider range of voices the opportunity to weigh in on how federal lands can be used and developed for decades to come.

Planning 2.0 was grounded by an idea at the heart of American democracy: that people most affected by public policy decisions deserve to be heard.

Elected officials in many Western states have, nevertheless, fought Planning 2.0, often in stark opposition to a wide range of local landowners, farmers, businesses and others who have the biggest stake in how BLM lands are used.

Also, emboldened by the results of last fall's elections, Republican leaders in the U.S. House of Representatives led an aggressive effort to kill Planning 2.0. They turned to an obscure, and relatively untested federal law called the Congressional Review Act that they claim allows them to roll back regulations within 60 legislative days of their enactment. Using CRA, the House voted against the Planning 2.0 in early February, and now the fate of the rule is the hands of the U.S. Senate.

I live on a 2,300-acre southwest Colorado farm that has been in my family for more than 100 years, and I'm one of those people who, if Planning 2.0 is dismantled, will essentially have no input into how nearby federal lands should be managed.

I acutely understand the stakes because a three-person board of commissioners for Montezuma County, where I live, has fiercely opposed Planning 2.0. As they see it, only the commissioners should have input into BLM matters and scrutiny of decisions about federal land development. They say that Planning 2.0 gives too much power to what they often call "special interest" voices.

That was their position throughout a nearly two-year local debate about whether the BLM should approve a master leasing plan for oil and gas development on federal lands in Montezuma County and neighboring areas.

It didn't matter to the commissioners that, at most of the public hearings on this issue, people like me who supported broader community input outnumbered others by 10 to 1. And the commissioners, who have long opposed reasonable limits to oil and gas operations, seem oblivious to our concerns that the proliferation of drilling in our area (there are currently more than 23,000 gas wells in southwest Colorado and northern New Mexico) has threatened our local environment. A methane cloud the size of the state of Delaware now hovers over the San Juan Basin in four states including Colorado and can be seen from space. People living here can smell the gas in the air, and the constant haze from methane and other pollutants is unmistakable. I'm 75 years old and can remember, decades ago, seeing from my window a breathtaking rock formation 70 miles away called Shiprock in New Mexico. Today, Shiprock has mostly disappeared from my view behind the haze.

There's also worry in southwest Colorado of mercury from several local coal-burning power plants finding its way into lakes and streams. Growing up here, I had never heard of mercury in these waterways. Also, on BLM and private lands near where I live, carbon dioxide-producing wells have emitted pollutants into our air at levels that exceed acceptable limits.

Fortunately, on December 19, 2016, the BLM, over the objections of the county commissioners and energy industry officials, approved the master leasing plan. But the planning process that the MLP allows won't begin for at least another year, offering ample opportunities to derail it — especially if President Trump's administration follows through on its calls for radical cuts in regulation. As County Commissioner Keenan Ertel told the Mancos Times, "We still have time to work on putting (the MLP) away."

Without Planning 2.0, the BLM and local stakeholders will be silenced about how to develop federal lands in the most responsible way. Instead, members of Congress, most of whom don't even understand the local circumstances, will wield far more power over those decisions.

There's a clear and important choice now before Sens. Michael Bennet and Cory Gardner. I hope our senators will stand up for keeping our voices in the process. They need to hear from all Coloradans who value an open, democratic process that informs responsible, reasonable use of our precious lands and natural resources. We want our voices heard. Don't shut us out.

Chuck McAfee is a third-generation landowner, community volunteer and retired electrical engineer living in Montezuma County in southwest Colorado.

Senate votes to kill BLM planning rule; Trump is expected to sign

By DENNIS WEBB

Dennis.Webb@gjsentinel.com

The U.S. Senate on Tuesday voted to roll back a new Bureau of Land Management planning rule that has won praise from some environmental and wildlife groups but been challenged in a lawsuit by some western counties.

The vote means that the congressional measure to rescind the regulation known as the BLM Planning 2.0 rule is headed to the desk of President Trump for his expected signature. The U.S. House of Representatives previously approved killing the rule.

U.S. Sen. Cory Gardner, R-Colo., voted in favor of repealing the rule, while Sen. Michael Bennet, D-Colo., voted against its repeal.

The BLM adopted the new rule during the Obama administration in an effort to update planning regulations that were more than 30 years old. The agency felt the planning process for resource management plans was dragging out too long, and that more collaboration and opportunity for public input was needed, along with more of a landscape-level planning approach to account for issues such as wildfire management that cross jurisdictional boundaries.